

TeslasPEMF System

2,500+ Yr. Old - Proven System

"Now In Modern Use"



Description

TeslasPEMF resonance magnetic analyzer /TeslasPEMF health test machine has finally been proved effective. TeslasPEMF resonance magnetic analyzer collects the frequency and energy from weak magnetic fields of human body through the hand, then transfers the human body information to a database connected to the hand energy collection sensor. Then the system gives out the sub-health comprehensive report and health experts suggest various ways how one can talk to their doctor to help the effected user improve his/her body toward better health.

TeslasPEMF resonance magnetic analyzer /TeslasPEMF health test. TeslasPEMF resonance magnetic **analyzer collects the frequency and energy from weak magnetic field of human body, then transfer the human body information to database by hand grip sensor.** Then give out the sub-health comprehensive report and experts suggest how to improve the body health.

TeslasPEMF Health Analyzer is an instrument designed to check health and sub-health in a swift and non-invasive way. It has the advantages of completeness, practicality, simplicity, fastness, economy, easy popularization, etc. With this depth and development of scientific research, a greater contribution for the cause of human health, has been done, and now having a broad development and application of effective protocols is possible.

TeslasPEMF Health Analyzer is an instrument designed to check health and sub-health in a swift and non-invasive way. It has the advantages of completeness, practicality, simplicity, fastness, economy, easy popularization, etc. With the depth and development of scientific research, it makes a greater contribution to determine the causes of human health, having a broad development and application prospect..

Main performance:

*Prediction without symptoms: With these many analyzed cells of pathological change, the analyzer can capture the changes possible for improved pathological development of each person's cells and can also predict the precursor (causes) of disease. By taking health-care actions after analysis, you will be enabled to effectively prevent many of the various suggested existing chronic diseases.

- **Energize 30 to 100 Trillion Cells' Mitochondria!**
- **Multiply the Stem Cell Production!**

*Speed and accuracy: Multiple indicators of your health can be obtained within minutes. This analysis method is designed to save your time and energy. The database of the analysis system has been established with scientific method, strict health statistic treatment and demonstration of a large number of over 500,00 clinical cases, leading thus to a high analysis accuracy.

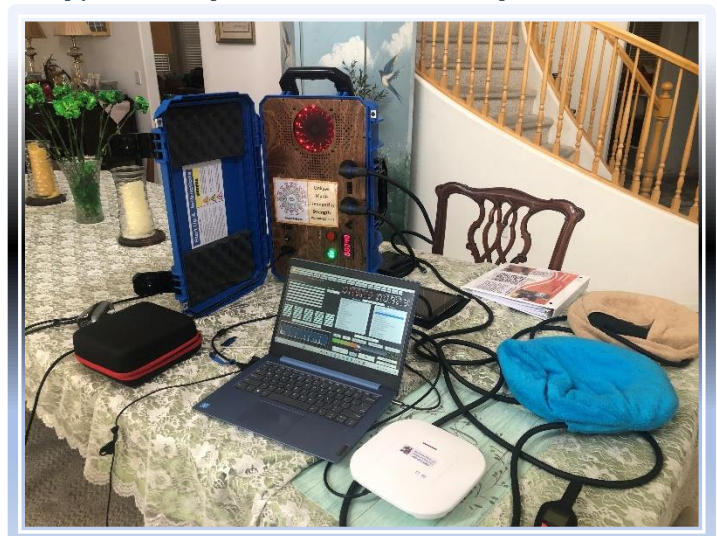
***Non-invasive and painless: The analysis will tell you the condition of your health without invasive chemical analysis or destructive radiography.**

*Simple and convenient: It is easy in operation and, in general, people will be able to analyze and interpret the result through easy usage. Health check can be performed in any place and at any time, saving the time of patients. The cost for analysis is minimal and can be accepted by most consumers. *Connected to computer shows immediately.

<http://TeslasPEMF.com> 2023 Model Now Has Over 51 Reports: for male and female + 3 male report cards + 3 female report cards + 1 Comprehensive report

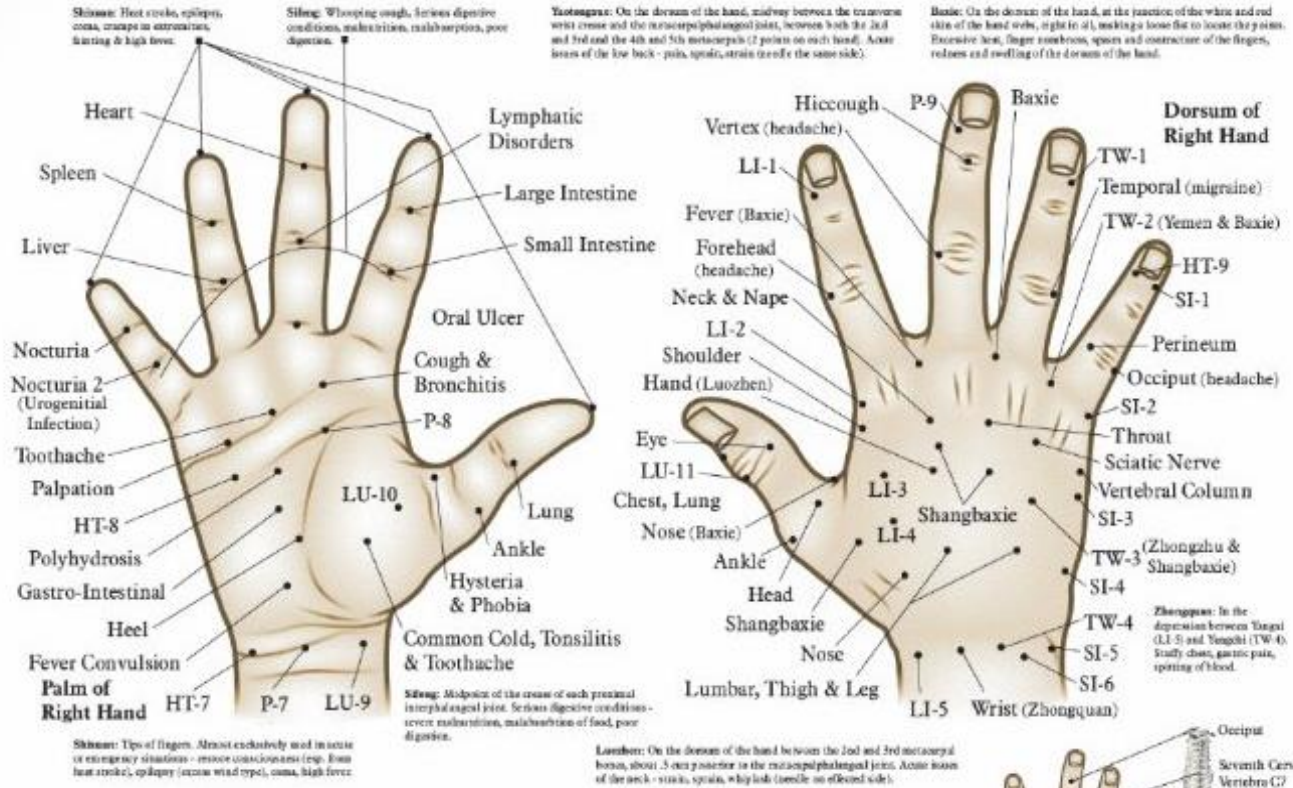
- 1.Cardiovascular and cerebrovascular
- 2.Gastrointestinal function
- 3.Liver function
- 4.Gallbladder function
- 5.Pancreatic function
- 6.Kidney function
- 7.Lung function
- 8.Brain nerve
- 9.Bone disease
- 10.Bone mineral density
- 11.Rheumatoid bone disease
12. Bone Growth Index
- 13.Blood sugar
- 14.Trace element
- 15.Vitamin

- 16.Amino Acid
- 17.Coenzyme
- 18.Endocrine System
- 19.Immune System
- 20.Human toxin
- 21.Heavy Metal
- 22.Basic physical quality
- 23.Allergy
- 24.Skin
- 25.Eye
- 26.Collagen
27. Male sexual function(male)
- 28.Large Intestine Function
- 29.Thyroid
- 30.Prostate(male)
- 31.Obesity
- 32.Sperm and semen(male)
33. Channels and collaterals
- 34.Pulse of heart and brain
- 35.Blood lipids
- 36.Gynecology(female)
- 37.Breast(female)
- 38.Menstrual cycle(female)
- 39.Human of Element
- 40.Test Report with Expert Advise
- 41.Manual Test report
- 42.Comprehensive
- 43.Fatty acid Report
- 44.hyperactivity(Children below 10 years old)



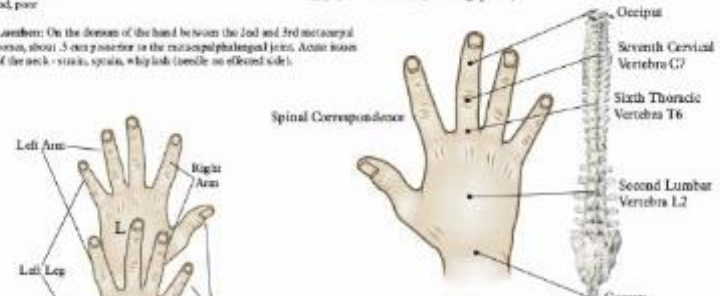
Now done with MODERN TECH!

Chinese Hand Acupuncture System



Hand acupuncture procedures can be performed quite easily by the beginner or experienced acupuncturist/practitioner. The points on the hand are both diagnostic and treatment points. Pain or problems in the body are commonly reflected in tender points on the hand. Stimulation of the tender points on the hand has a positive effect on the body. These tender points can be treated by needles, EMTs, laser, electro-acupuncture or merely rubbing the points.

In Korean hand acupuncture, the fingers correspond to the arms, legs and trunk of the body. The thumb and pinky correspond to the legs. The index and ring fingers correspond to the arms. And the middle finger corresponds to the head, neck and upper part of the spine. On the right hand, the thumb corresponds to the left leg. While on the left hand, the pinky corresponds to the left leg.



Korean Hand Acupuncture System